

Sorbent Tube Silica Gel 6 × 70 150/75 50 tubes/box

Operation Manual

■ Included Items

Check the contents of the package before using the product.









 Silica gel tube Set of 50

 Polyethylene cap (PE)  Set of 100

- * If any of the items are damaged or missing, contact your Sibata distributor where you purchased the product.
- * This product does not include a sorbent tube holder, suction pump, or connecting flexible tube, so prepare them separately.

■ Safety Precautions

<p>⚠ WARNING</p> <p>The analysis should be performed by someone with skills and expertise in the field of chemistry.</p> <div style="text-align: right;">  Mandatory </div>	<p>⚠ WARNING</p> <p>Do not use this product for other purposes or applications.</p> <div style="text-align: right;">  Prohibited </div>	<p>⚠ WARNING</p> <p>Do not leave the product within reach of children.</p> <div style="text-align: right;">  Do Not Touch </div>
<p>⚠ CAUTION</p> <p>Use a sorbent tube holder for individual exposure measurements.</p> <div style="text-align: right;">  Mandatory </div>	<p>⚠ CAUTION</p> <p>Never touch glass cut surfaces or fragments.</p> <div style="text-align: right;">  Do Not Touch </div>	<p>⚠ CAUTION</p> <p>Dispose of this product appropriately after use.</p> <div style="text-align: right;">  Mandatory </div>

■ Expiration Date of This Product

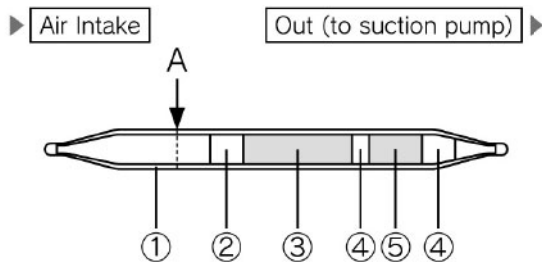
This product is valid for 5 years after production. Please refer to the expiration date written on the tube.

■ Main Specifications

Adsorbent	Silica gel (mesh of 20 to 40) 150 mg + 75 mg
Size / Weight	About O.D. 6 × 70 mm / About 1.9 g (per tube)
Tubes Included	Set of 50
Identification Number	SST-SG225
Item Code	090160-021005



Names of Parts



- ① Glass tube
- ② Quartz wool plug
- ③ Silica gel (150 mg)
- ④ Urethane foam plug
- ⑤ Silica gel (75 mg)

Instructions for Use

Before use, be sure to thoroughly read the "Safety Precautions".

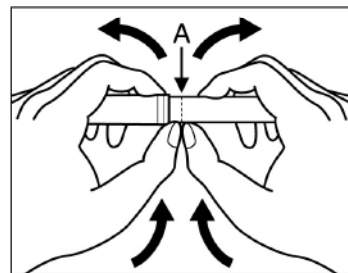
- (1) Immediately before sampling, cut off the both ends of silica gel tubes.
- (2) Connect the silica gel tube and suction pump using a flexible tube.
- (3) Set up the suction pump according to the purpose of the measurements. Start the suction, and at the same time sampling starts.
- (4) When sampling is finished, remove the flexible tube from the silica gel tube. Attach the PE caps to both ends of the silica gel tube.

After sampling, store the silica gel tube in a clean, cool, dark location until analysis is performed.

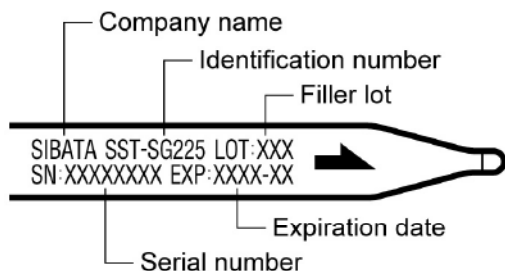
- (5) Immediately before analysis, cut off the silica gel tube by putting your fingernails at the pre-cut groove (Point A where should be scratched with a file before you cut), and then by pulling both sides apart (as shown in the figure on the right side).

After the tube is snapped, use tweezers to take out the quartz wool placed inside. Place the "Front section silica gel (150 mg)" in an amber test tube with a stopper, or in an amber vial bottle (with a rubber septum), and seal it.

Also similarly place the "Back section silica gel (75 mg)" in a similar identical test tube or vial bottle and seal it.



Print contents



SIBATA SCIENTIFIC TECHNOLOGY LTD.
 1-1-62, Nakane, Soka, Saitama, 340-0005, Japan
 TEL:+81-48-933-1582 FAX:+81-48-933-1591
 E-mail:overseas@sibata.co.jp
<https://www.sibata.co.jp/en/>