



DISTRIBUTED BY:

Sedulitas

PEOPLE | PASSION | PRECISION

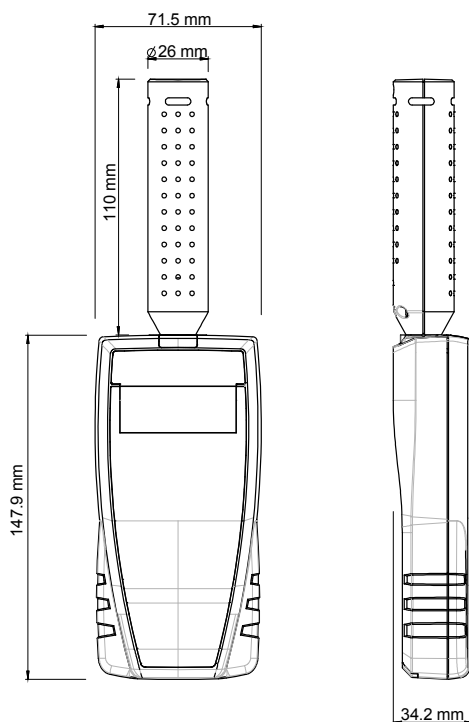
info@sedulitas.co.za +27 (0)82 551 4001
www.sedulitas.co.za

CO detector
CO 50

KEY POINTS

- Easy to use
- HOLD function
- Built-in probe
- Auto shut-off: 20 minutes

FEATURES OF THE HOUSING



Material: ABS

Protection: IP54

Display: 2 lines, LCD technology, 50 x 36 mm.
1 line of 5 digits with 7 segments (value)
1 line of 5 digits with 16 segments (unit)

Height of digits:

Values: 9.2 mm

Units: 4.7 mm

Weight: 200 g (with batteries)



TECHNICAL FEATURES

Parameter	Temperature	CO
Measuring units	°C, °F	ppm
Measuring Range	From -20 to +80°C	From 0 to 500 ppm
Accuracy*	±0.4% of reading ±0.3°C	From 0 to 100 ppm: ±3 ppm From 100 to 500 ppm: ±3% of reading
Resolution	0.1°C	0.1 ppm
Response time	T63 = 5 s	T63 = 35 s
Measuring elements	NTC	Electrochemical sensor
Conditions of use (°C/%RH/m)	From 0 to +50°C. In non-condensing conditions. From 0 to 2000 m.	
Storage temperature	From -20 to +80°C	
Power supply	4 batteries AAA LR03 1.5 V	
Battery life	200 hours	
European directives	2014/30/EU EMC; 2014/35/EU Low Voltage; 2011/65/EU RoHS II; 2012/19/EU WEEE	

*All the accuracies indicated in this technical datasheet were stated in laboratory conditions, and can be guaranteed for measurements carried out in the same conditions, or carried out with calibration compensation

SUPPLIED WITH

Instruments are supplied with an adjustment certificate and a soft case.



ACCESSORIES

- Calibration certificate
- Soft case
- Magnetic protective housing



Only the accessories supplied with the device must be used.



MAINTENANCE

We carry out calibration, adjustment and maintenance of your instruments to guarantee a constant level of quality of your measurements. As part of Quality Assurance Standards, we recommend you to carry out a yearly checking.

GUARANTEE

Instruments have 1-year guarantee for any manufacturing defect (return to our After-Sales Service required for appraisal).

PRECAUTIONS FOR USE

Please always use the device in accordance with its intended use and within parameters described in the technical features in order not to compromise the protection ensured by the device.

USE OF THE INSTRUMENT

To measure CO

- Switch on the instrument by pressing briefly on **“On/Off/Hold”**.
The instrument displays its name “CO50” then a 5 second countdown. This count corresponds to the preheating time of the sensor. At the end of the countdown, the measured value of CO is displayed.
- Press briefly on **“Select”** to move from CO measurement to temperature measurement.

Hold the measurement

During measurement:

- Press briefly on **“On/Off/Hold”** to hold measurement.
“Hold” appears on the screen and CO and temperature measurements are fixed.
- Press briefly on **“Select”** to move from one parameter to the other.
- Press again briefly on **“On/Off/Hold”** to exit the Hold function.

Change the temperature unit

The instrument is on

- Pressing longer on **“Select”** to change the temperature unit.
- Press briefly on **“Select”** to select the unit: °C or °F.
- Pressing longer on **“Select”** to confirm the unit and return to the normal measuring mode.

How to change batteries

- Remove the front part at the back of the instrument.
- Replace used batteries by new batteries AAA LR03 1.5 V.
- Replace the front.

Auto shut-off: the instrument switches off if not used during 20 minutes.



“Select” key

“On/Off/Hold” key



Once returned to KIMO, required waste collection will be assured in the respect of the environment in accordance with European guidelines relating to WEEE.

www.kimo.fr



EXPORT DEPARTMENT

Tel : + 33. 1. 60. 06. 69. 25 - Fax : + 33. 1. 60. 06. 69. 29

e-mail : export@kimo.fr



DISTRIBUTED BY:

Sedulitas

PEOPLE | PASSION | PRECISION

info@sedulitas.co.za +27 (0)82 551 4001
www.sedulitas.co.za

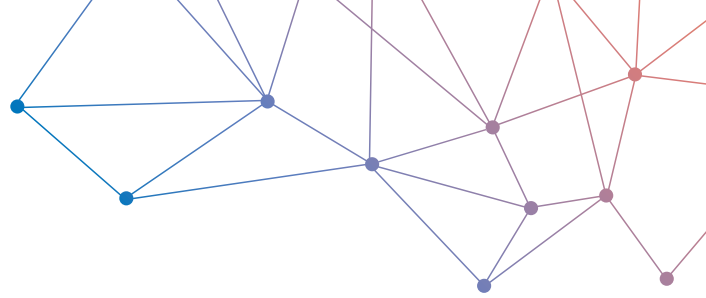


DISTRIBUTED BY:

Sedulitas

PEOPLE | PASSION | PRECISION

info@sedulitas.co.za +27 (0)82 551 4001
www.sedulitas.co.za



DATA SHEET

CO 110

CO meter



Supplied with
CALIBRATION
certificate



Easy to use



CO max display



Adjustable backlight



2 configurable alarm thresholds

Features

- CO maximum
- 2 configurable alarms
- Selection of temperature units
- Hold function
- Backlight
- Configurable auto shut-off
- Display of minimum and maximum values

Technical specifications

Parameters	Measuring units	Accuracy*	Measuring range	Resolution
CO	ppm	±3 ppm ±3% of reading	From 0 to 100 ppm From 100 to 500 ppm	0.1 ppm
Temperature	°C, °F	±0.4% of reading ±0.3 °C	From -20 to +80 °C	0.1 °C

*All the accuracies indicated in this technical datasheet were stated in laboratory conditions, and can be guaranteed for measurements carried out in the same conditions, or carried out with calibration compensation.

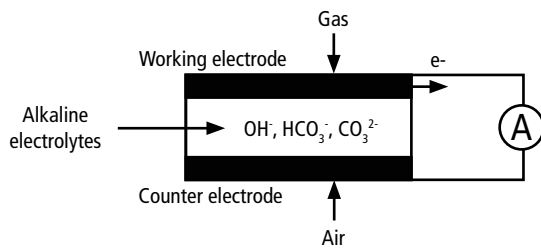
General features

Measuring element	CO: electrochemical sensor Temperature: NTC
Display	4 lines, LCD technology. Dimensions 50 x 36 mm 2 lines of 5 digits with 7 segments (value) 2 lines of 5 digits with 16 segments (unit)
Connector	Retractable, 0.45 m length, extension: 2.4 m
Housing	ABS, protection IP54
Keypad	5 keys
European directives	2014/30/EU EMC; 2014/35/EU Low Voltage; 2011/65/EU RoHS II; 2012/19/EU WEEE
Power supply	4 batteries AAA LR03 1.5 V
Battery life	200 hours
Ambience	Neutral Gas
Conditions of use (°C, %HR, m)	From 0 to +50 °C. In non condensing conditions. From 0 to 2000 m.
Storage temperature	From -20 to +80 °C
Auto shut-off	Adjustable from 0 to 120 min
Weight	310 g

Operating principle

Electrochemical sensor

When CO goes through an alectrolyte solution, it intercedes in the reactions of electrolyse and produces an increase of the quantity of produced electrons. The source electrons of a current which is around microampere are directly proportional to CO concentration.



Thermometer: NTC probe

Negative temperature coefficient probes are thermistors with a resistance that decreases with temperature according to the equation below.

$$R_{(T)} = R_{(T_0)} e^{\left(\frac{\alpha}{100} \times (T_0 + 273.15)^2 \times \left(\frac{1}{T + 273.5} - \frac{1}{T_0 + 273.5} \right) \right)}$$

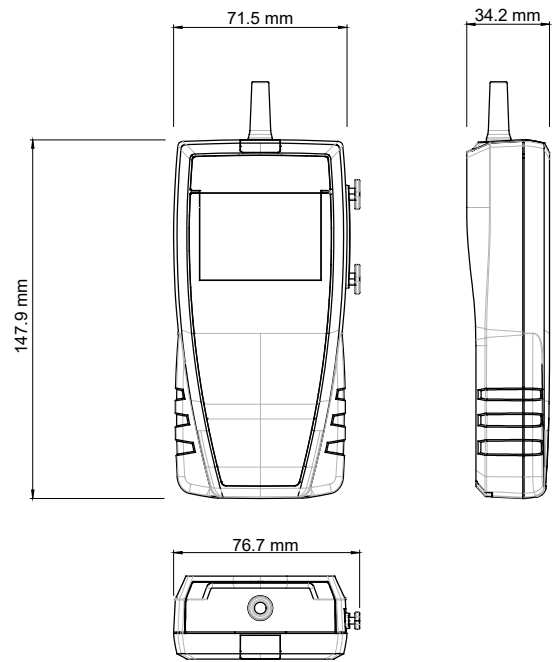
R_T = resistance sensor value at temperature T

$R(T_0)$ = resistance sensor value at reference temperature T_0

T and T_0 in °C

α and T_0 sensor specific constants

Dimensions (in mm)



Kit content

- Calibration certificate
- Transport case (ref.: ST 110)

Accessories

Nom	Référence
Magnetic protective housing	CQ 15
Telescopic extension 1 m length, with index at ±90°	RTE
ABS transport case	MT 51

Maintenance

We carry out calibration, adjustment and maintenance of your instruments to guarantee a constant level of quality of your measurements. As part of Quality Assurance Standards, we recommend you to carry out a yearly checking.

Warranty

Instruments have 1-year warranty for any manufacturing defect (return to our After-Sales Service required for appraisal).